



Manorville Road

, Hemel Hempstead, HP3 0AP

Clements are delighted to market this magnificent four bedroom detached family home on the ever popular Manor Estate in Apsley just a short walk from Apsley Station and all local amenities. The house offers excellent living accommodation to include: kitchen/breakfast room, beautiful living room and large conservatory as well as WC on the ground floor, four bedrooms, family bathroom and en-suite to master on the first floor. Also benefitting a fully enclosed a sizeable rear garden as well as driveway parking and a garage. THIS PROPERTY IS A MUST SEE.

Offers Invited £625,000

21a Manorville Road

, Hemel Hempstead, HP3 0AP



- Detached Family Home
- Large Living Accommodation
- Driveway Parking
- Very Close to Good Schools
- Four Bedrooms
- Beautifully Presented Throughout
- Garage
- En-Suite to Master
- Conservatory
- Walking Distance to Apsley Station

- Entrance**

Porch

Entrance Hallway

Cloakroom

Integral Garage

Kitchen/Breakfast Room
17'9" x 8'5" (5.41m x 2.57m)

Lounge/Diner
20'9" x 15'11" (6.32m x 4.85m)

Conservatory
12'6" x 10'2" (3.81m x 3.10m)

First Floor Landing
- Master Bedroom**
15'1" x 9'3" (4.60m x 2.82m)

En-Suite Shower Room

Bedroom Two
12'4" x 8'4" (3.76m x 2.54m)

Bedroom Three
12'0" x 9'0" (3.66m x 2.74m)

Bedroom Four
11'5" x 8'0" (3.48m x 2.44m)

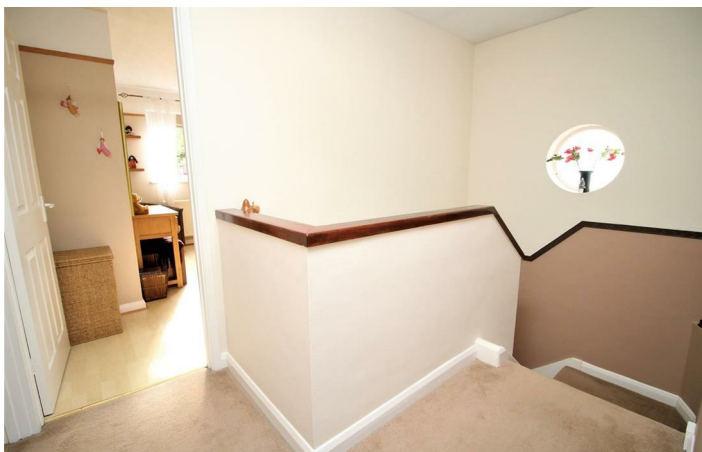
Bathroom

Rear Garden

Front Garden

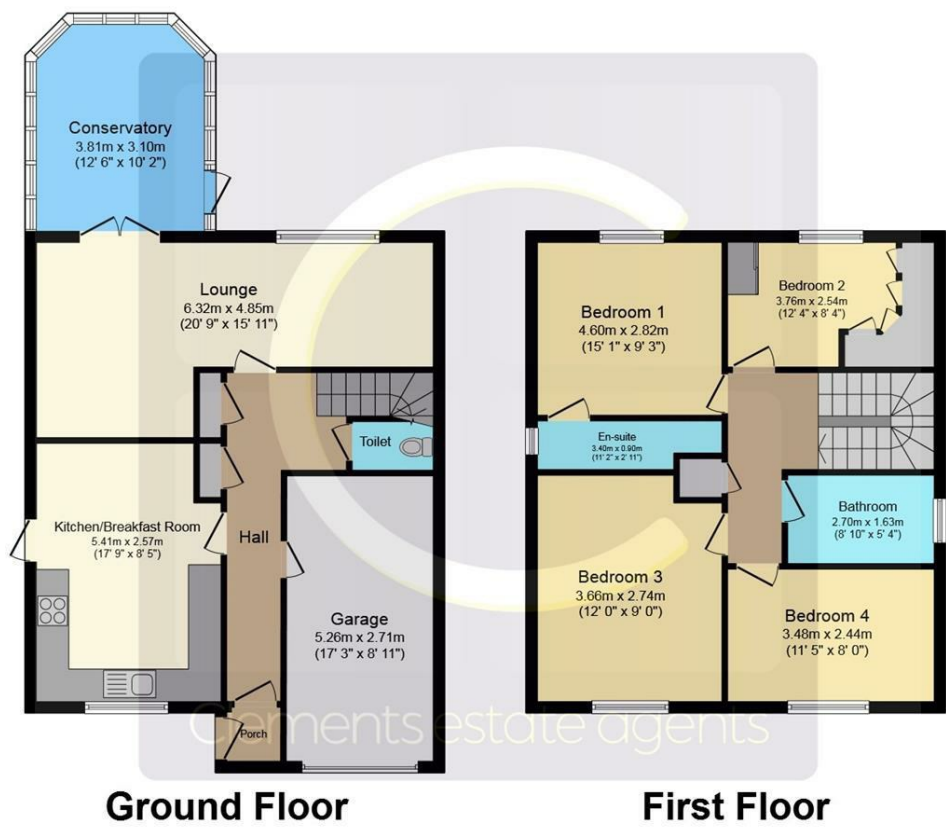


Energy Efficiency Rating		
	Current	Potential
Very energy efficient - lower running costs		
(92 plus) A		
(81-91) B		81
(69-80) C	65	
(55-68) D		
(39-54) E		
(21-38) F		
(1-20) G		
Not energy efficient - higher running costs		
England & Wales	EU Directive 2002/91/EC	





Floor Plan



Total floor area 139.9 sq.m. (1,506 sq.ft.) approx

This plan is for illustration purposes only and may not be representative of the property. Plan not to scale. Powered by PropertyBox

These particulars, whilst believed to be accurate are set out as a general outline only for guidance and do not constitute any part of an offer or contract. Intending purchasers should not rely on them as statements of representation of fact, but must satisfy themselves by inspection or otherwise as to their accuracy. No person in this firms employment has the authority to make or give any representation or warranty in respect of the property.

